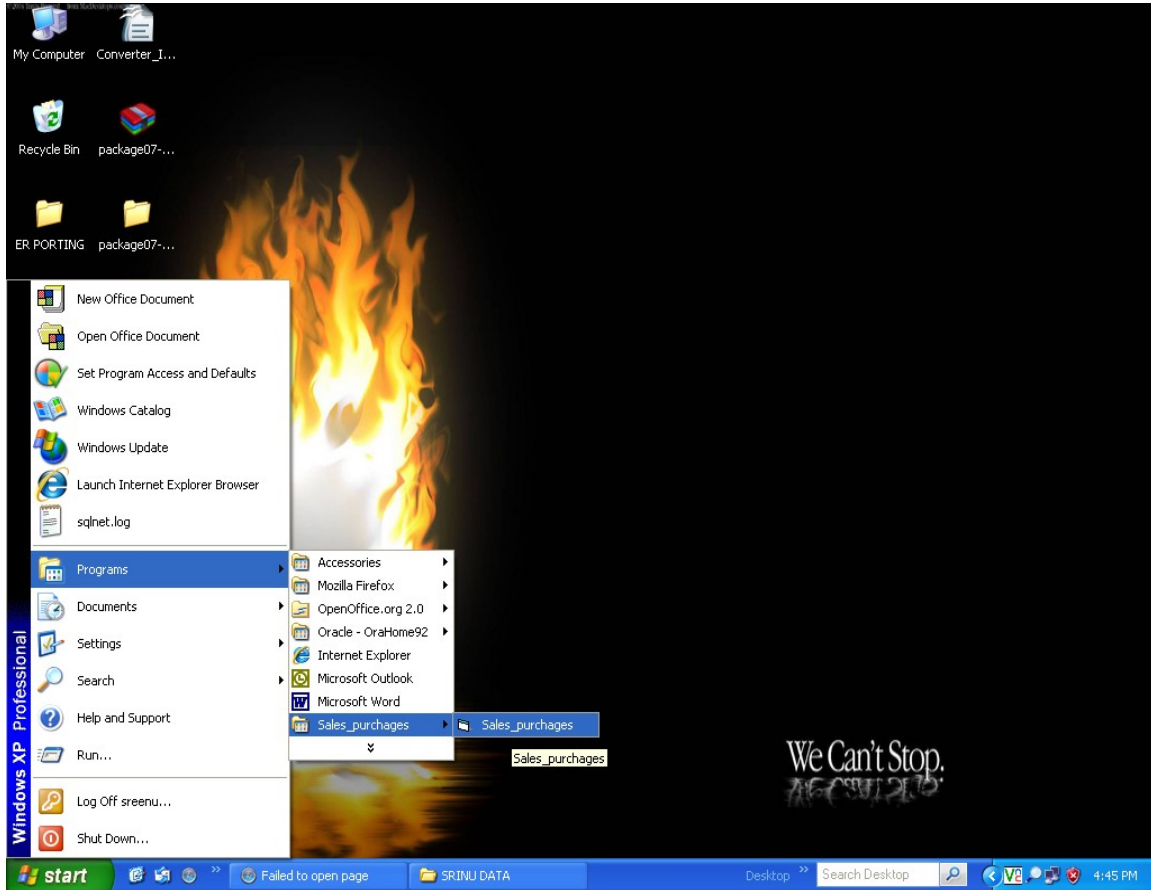
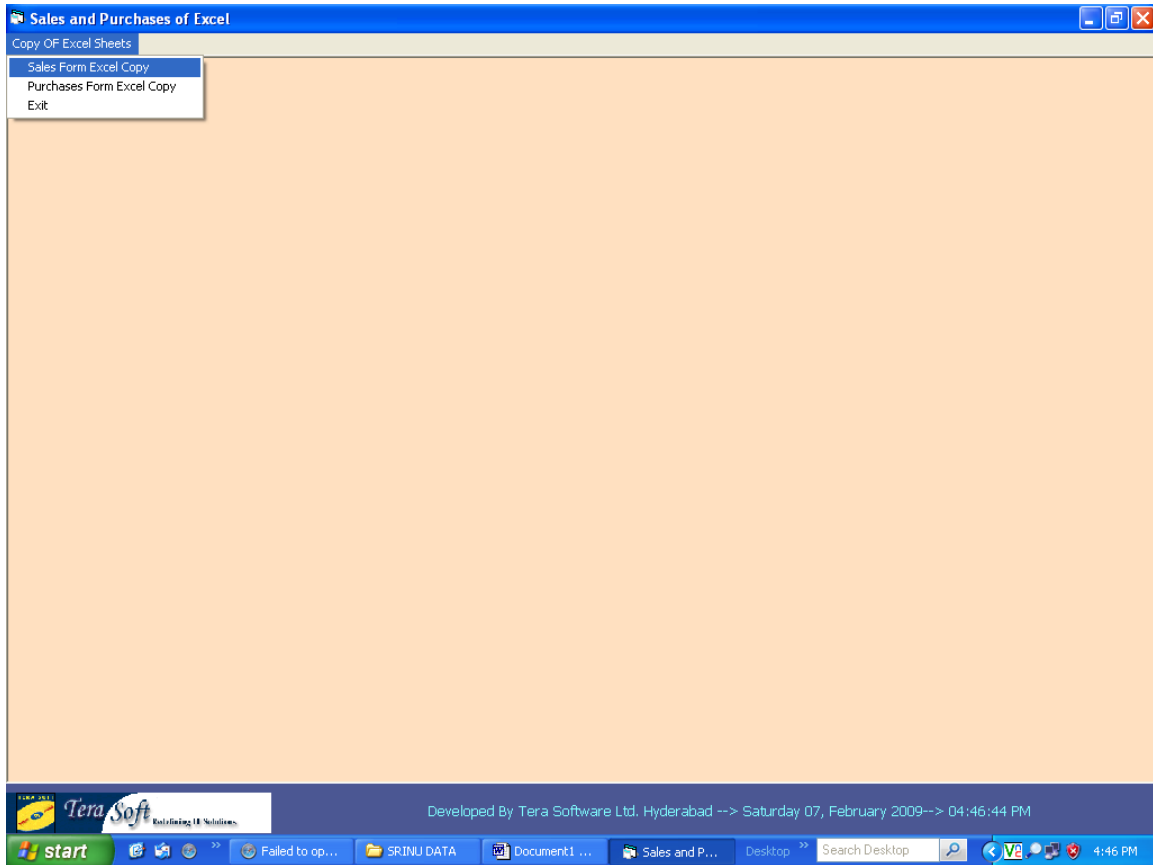


Extract the data from your database and save it in xls format.

1.)To open the converter go-to(Start>Programs>Sales_Purchases>sales_purchases)



2.)select '**Copy of Excel Sheets**' --->'**Sales Form Excel Copy**' for converting sales records saved in xls format and select on '**Purchases Form Excel Copy**' for converting purchases records saved in xls format



3.)Filling The Details:-

a.) Browse for Excel Sheet from which you want to Create the e-Annexure Excel Sheet(Sales/Purchases).

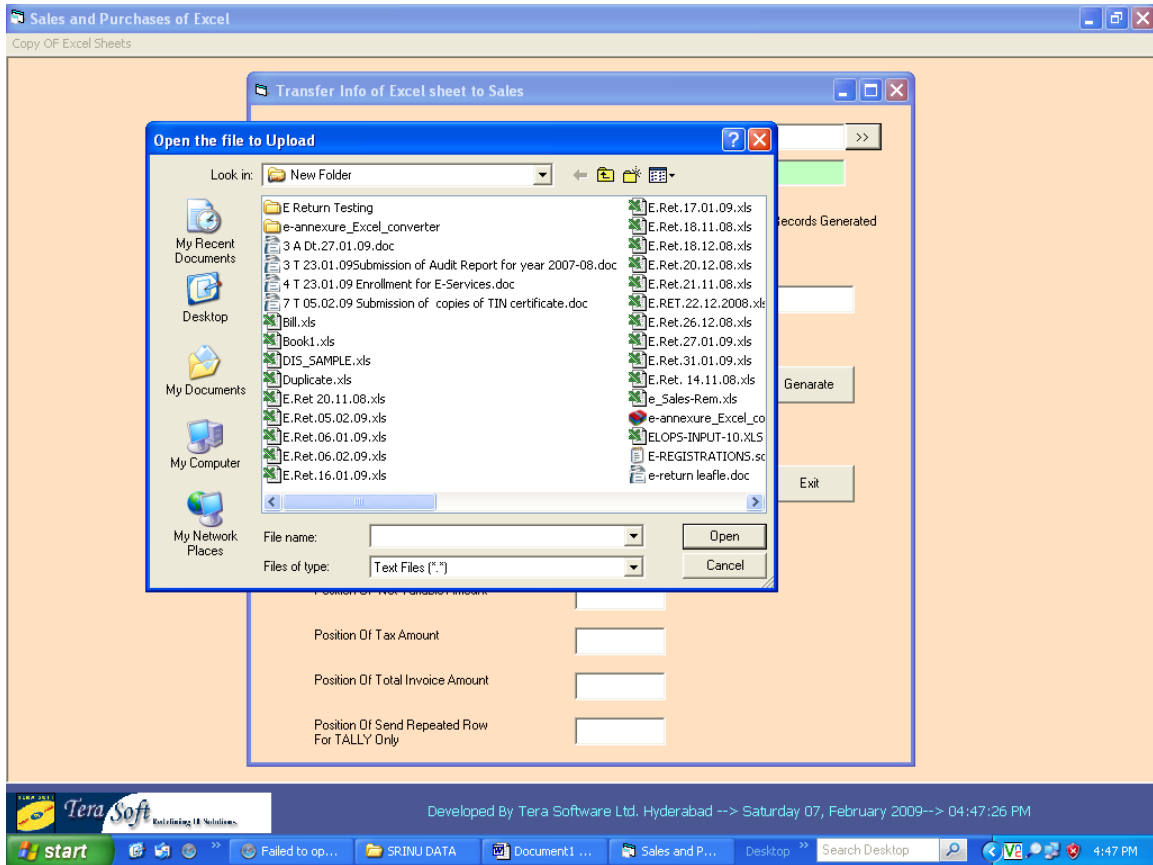
b.)The '**Destination File Name**' Location will be Default i.e (c:\program files\project1\e_sales.xls)or(c:\program files\project1\e_purchases.xls)i.e The Excel Sheets Should be in that location.

The screenshot shows a Windows XP desktop environment. The main window is titled "Sales and Purchases of Excel" with a subtitle "Copy Of Excel Sheets". A modal dialog box titled "Transfer Info of Excel sheet to Sales" is open in the center. The dialog box has a blue title bar and a light orange background. It contains the following fields and controls:

- Source File Name:** A text input field with a browse button (two arrows pointing right).
- Destination File Name:** A text input field containing the default path "C:\Program Files\Project1\Ve_Sales.xls".
- Position Of Delar TIN:** A text input field.
- Position Of Name Of The Dealer:** A text input field.
- Position Of PIN CODE:** A text input field.
- Position Of Period Covered Return Month:** A text input field.
- Position Of Period Covered Return Year:** A text input field.
- Position Of Tax Invoice NO:** A text input field.
- Position Of TAX Invoice Date:** A text input field.
- Position Of Invoice TIN:** A text input field.
- Position Of Net Taxable Amount:** A text input field.
- Position Of Tax Amount:** A text input field.
- Position Of Total Invoice Amount:** A text input field.
- Position Of Send Repeated Row For TALLY Only:** A text input field.
- No Of Records Generated:** A text input field.
- Buttons:** "Generate" and "Exit" buttons are located on the right side of the dialog box.

At the bottom of the screen, the Windows taskbar is visible, showing the Start button, several icons, and the system tray with the date and time: "Saturday 07, February 2009 --> 04:47:06 PM". The taskbar also shows the text "Developed By Tera Software Ltd. Hyderabad --> Saturday 07, February 2009 --> 04:47:06 PM".

4.)Browse For the Source file From which your e-Annexure Sheet is to be Prepared.



5.)Next,Fill the cell Numbers as per the Source Excel Sheet and Click on the '**Generate**' Button.The Last Column '**Position of Send Repeated Row For Tally Only**' is to be Filled as '**1**' if Tally is Not Used and If Tally is used Fill the repeated cell details.

The screenshot shows a software window titled "Transfer Info of Excel sheet to Sales" with the following fields and controls:

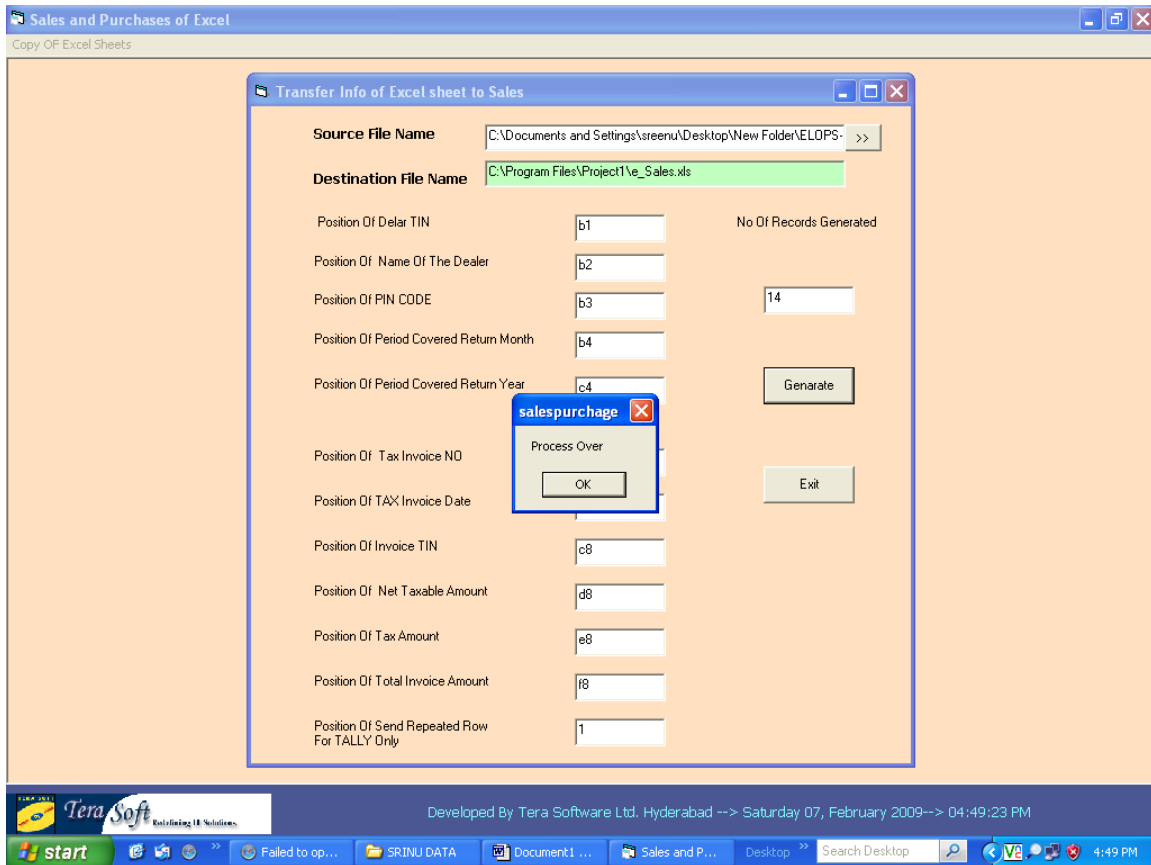
Field Name	Cell Reference	Value
Source File Name		C:\Documents and Settings\sreenu\Desktop\New Folder\ELOPS- >>
Destination File Name		C:\Program Files\Project1\ve_Sales.xls
Position Of Delar TIN	b1	
Position Of Name Of The Dealer	b2	
Position Of PIN CODE	b3	
Position Of Period Covered Return Month	b4	
Position Of Period Covered Return Year	c4	
Position Of Tax Invoice NO	a8	
Position Of TAX Invoice Date	b8	
Position Of Invoice TIN	c8	
Position Of Net Taxable Amount	d8	
Position Of Tax Amount	e8	
Position Of Total Invoice Amount	f8	
Position Of Send Repeated Row For TALLY Only	1	

Additional controls include a "No Of Records Generated" field, a "Generate" button, and an "Exit" button.

System information at the bottom: Developed By Tera Software Ltd. Hyderabad --> Saturday 07, February 2009--> 04:49:01 PM

For position of tax invoice details, only starting cell details to be entered.

6.)After Clicking the '**Generate**' Button it Processes the Data as per the given column numbers into e-Annexure Excel Sheets and process over button Appears.The Number of rows processed is also shown there.Click '**OK**' to complete the Task.



7.)Click 'EXIT' to Quit.

